



# Vision Impairment

**Vision impairment, low vision and legally blind are terms used to describe significant sight loss that cannot be corrected with glasses.**

**The pictures below are examples only of the effects of different types of vision impairment.**

Blurred vision  
eg. Cataracts



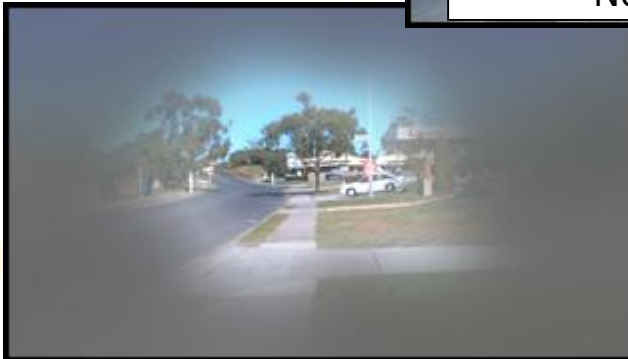
Central vision loss  
eg. Macular Degeneration



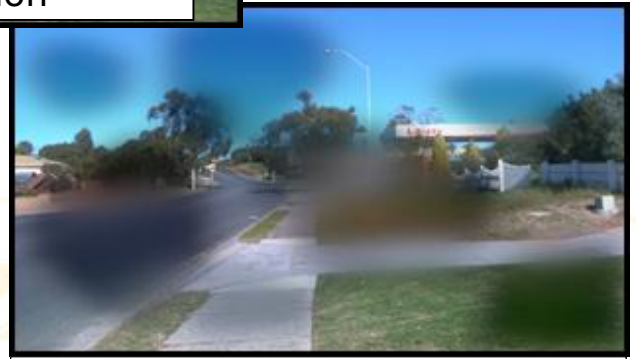
Normal Vision



Peripheral vision loss eg.  
Glaucoma, Retinitis Pigmentosa



Patchy vision  
eg. Diabetic Retinopathy





**A person's level of vision and the way in which they use it will differ. Vision may also fluctuate due to a number of factors, including changing light conditions, time of day, a person's health and/or medication.**

**Legally blind is a term used by Government departments when determining entitlement to benefits such as a disability pension or an aged pension.**

**In their examination, an Ophthalmologist would measure a person's vision and complete a form verifying eligibility as legally blind.**

**A person may be considered legally blind if:**

- i) they are only able to see the top letter on an eye chart from a distance of 6 metres (their vision would be measured as 6/60) and/or**
- ii) they have a restricted visual field of 10° or less**

**It is important to remember that 90% of people who are legally blind will have some useable (and useful) vision.**

*This work is copyright. Except as is provided below, Senses Australia reserves and withholds all intellectual property rights.*

*Senses Australia hereby grants you a non-exclusive, perpetual licence to broadcast, lend and distribute this work for training or educational purposes subject to Senses Australia being acknowledged as the source.*

*Apart from any use permitted under the Copyright Act 1968, you must not make any other use of this work including copying, hiring, lending, duplication, distribution, reproduction or on-selling of this work, without the prior written consent of Senses Australia.*

Updated 20.3.14

11 Kitchener Avenue  
Burswood WA 6100  
PO Box 143  
Burswood WA 6100

Tel 08 9473 5400  
Fax 08 9473 5499  
TTY 08 9473 5488  
Email [admin@senses.org.au](mailto:admin@senses.org.au)  
[www.senses.org.au](http://www.senses.org.au)  
[www.deafblindinformation.org.au](http://www.deafblindinformation.org.au)



Ending the isolation

